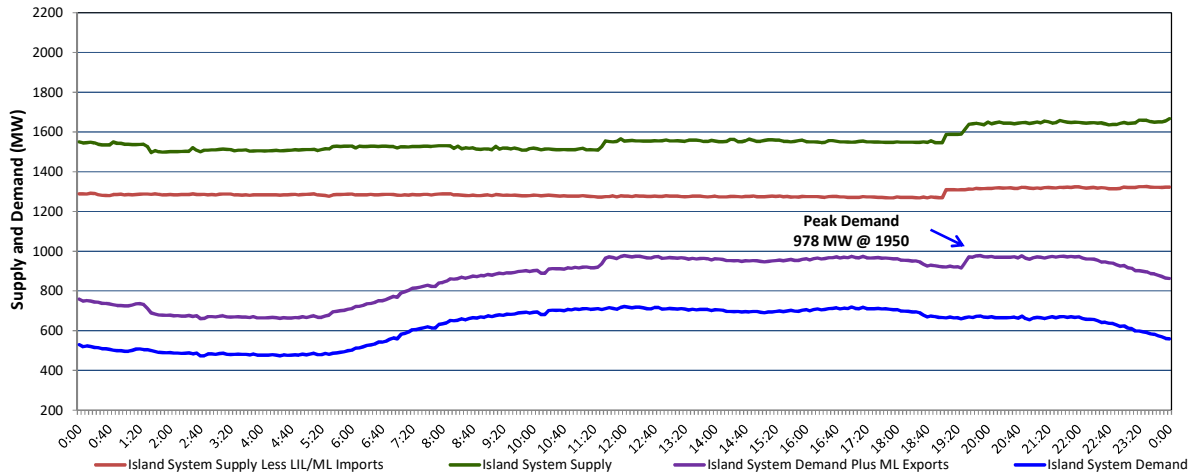


**Newfoundland Labrador Hydro (NLH)  
Supply and Demand Status Report Filed Friday, June 30, 2023**

**Section 1  
Island Interconnected System Supply, Demand & Exports  
Actual 24 Hour System Performance For Thursday, June 29, 2023**



**Supply Notes For June 29, 2023**

- A As of 0701 hours, March 06, 2023, Upper Salmon Unit unavailable (84 MW).
- B As of 0006 hours, April 09, 2023, Holyrood Unit 3 unavailable due to planned outage (150 MW).
- C As of 1600 hours, May 15, 2023, Holyrood Unit 1 available but not operating (170 MW).
- D As of 0800 hours, May 21, 2023, Holyrood Unit 2 unavailable due to planned outage (170 MW).
- E As of 1751 hours, May 24, 2023, Bay d'Espoir Unit 5 unavailable due to planned outage (76.5 MW).
- F As of 0803 hours, June 28, 2023, Hardwoods Gas Turbine unavailable due to planned outage (50 MW).
- G At 0903 hours, June 29, 2023, St. Anthony Diesel Plant available at 8.85 MW (9.7 MW).
- H At 1901 hours, June 29, 2023, Granite Canal Unit available (40 MW).

**Section 2  
Island Interconnected Supply and Demand**

Fri, Jun 30, 2023	Island System Outlook <sup>3</sup>	Seven-Day Forecast	Temperature (°C)		Island System Daily Peak Demand (MW)	
			Morning	Evening	Forecast	Adjusted <sup>7</sup>
Available Island System Supply: <sup>5</sup>	1,646 MW	Friday, June 30, 2023	19	19	1,040	1,040
NLH Island Generation: <sup>4,8</sup>	990 MW	Saturday, July 1, 2023	15	16	680	680
NLH Island Power Purchases: <sup>6</sup>	105 MW	Sunday, July 2, 2023	16	17	720	720
Other Island Generation:	215 MW	Monday, July 3, 2023	18	18	770	770
ML/LIL Imports:	336 MW	Tuesday, July 4, 2023	19	18	765	765
Current St. John's Temperature & Windchill:	19 °C N/A °C	Wednesday, July 5, 2023	16	18	760	760
7-Day Island Peak Demand Forecast:	1,040 MW	Thursday, July 6, 2023	17	18	760	760

**Supply Notes For June 30, 2023**

- Notes:
1. Generation outages for running and corrective maintenance are included. These are not unusual for power system operations. They generally do not impact customer supply. The power system operators schedule outages to system equipment whenever possible to coincide with periods when customer demands are low and sufficient supply reserves are available. However, from time to time equipment outages are necessary and reserves may be impacted.
  2. Due to the Island system having no synchronous connections to the larger North American grid, when there is a sudden loss of large generating units there may be a requirement for some customer's load to be interrupted for short periods to bring generation output equal to customer demand. This automatic action of power system protection, referred to as under frequency load shedding (UFLS), is necessary to ensure the integrity and reliability of system equipment. Under frequency events have typically occurred 5 to 8 times per year on the Island Interconnected System and the resultant customer load interruptions are generally less than 30 minutes. With the activation of the Maritime Link frequency controller during the winter of 2018, UFLS events have occurred less frequently.
  3. As of 0800 Hours.
  4. Gross output including station service at Holyrood (24.5 MW) and improved NLH hydraulic output due to water levels (35 MW).
  5. Gross output from all Island sources (including Note 4).
  6. NLH Island Power Purchases include: CBPP Co-Gen, Nalcor Exploits, Rattle Brook, Star Lake, Wind Generation and capacity assistance (when applicable).
  7. Adjusted for curtailable load, market activities and the impact of voltage reduction when applicable.
  8. Due to limitations inherent in the design of combustion turbines, the output of combustion turbines may be reduced in the event that ambient temperatures exceed the threshold

**Section 3  
Island Peak Demand Information  
Previous Day Actual Peak and Current Day Forecast Peak**

Thu, Jun 29, 2023	Actual Island Peak Demand <sup>9</sup>	19:50	978 MW
Fri, Jun 30, 2023	Forecast Island Peak Demand		1,040 MW

Notes: 9. Island Demand / LIL / ML Exports (where applicable) is supplied by NLH generation and purchases, plus generation owned and operated by Newfoundland Power and Corner Brook Pulp & Paper (Deer Lake Power, DLP).